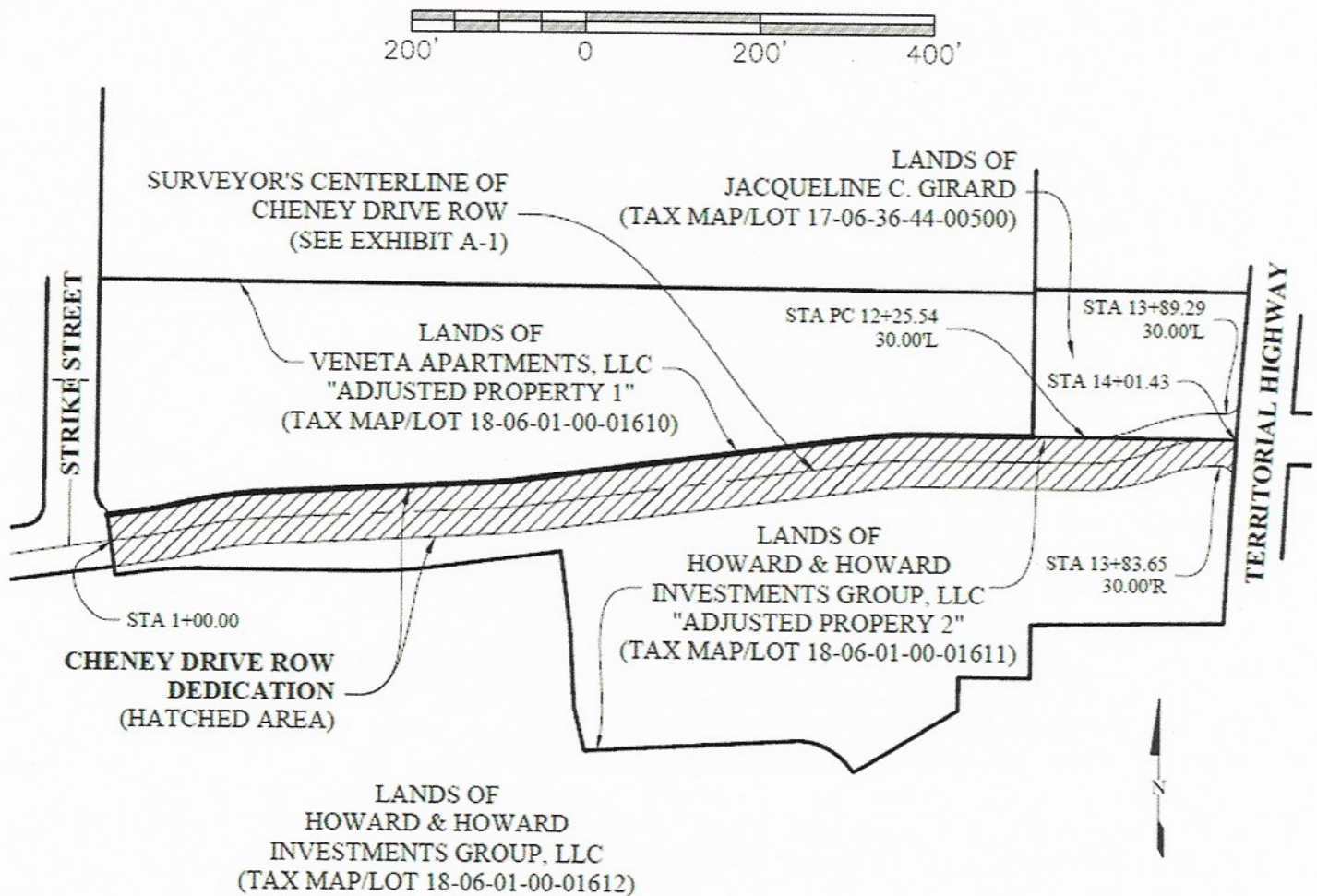


EXHIBIT B
MAP
CHENEY DRIVE DEDICATION
FROM LANDS OF HOWARD & HOWARD INVESTMENT GROUP LLC
(Tax Lot 01611 of Tax Map 18-06-01-00)



REGISTERED
PROFESSIONAL
LAND SURVEYOR

Rex A. Betz

OREGON
JULY 20, 1993
REX A. BETZ
#2606

RENEWS: 12/31/23